



Proposed Expansion of ReSource Waste Services of Ware

ReSource Waste Services of Ware, which operates a rail transfer facility at 198 East Street in Ware, MA, proposes to increase its permitted capacity.

About ReSource Waste Services of Ware

The facility is permitted as a construction and demolition (C&D) material handling and processing facility by the Massachusetts Department of Environmental Protection (MassDEP) and is authorized to process 750 tons per weekday and 500 tons per day on Saturdays, with a maximum annual permitted tonnage of 214,500 tons. In 2020, it processed approximately 120,000 inbound tons of material. It operates weekdays from 7 a.m. to 4 p.m. and on Saturdays from 7 a.m. to 1 p.m.

The facility received its site assignment permit from the Town of Ware in 2004 and received its Authorization to Operate from MassDEP in 2006. The facility had several owners/operators over the years and was acquired by our company on August 6, 2019.

The facility serves as a consolidation site for C&D residuals from ReSource's other facilities, and utilizes an on-site rail system to ship those residuals to landfills. The facility also accepts an incidental amount of a C&D materials from the local community. The facility employs six individuals and also supports indirect jobs associated with the haulers who deliver waste to the facility. Additional jobs in the region are tied to local goods and services related to the facility.

The Proposed Project

ReSource Waste Services of Ware proposes a two-step project: First it proposes to increase its permitted capacity to 1,125 tons on weekdays (310,625 per year), which is anticipated to go into effect in the spring of 2023 upon receipt of permit approvals. It then proposes to increase its permitted capacity to 1,400 tons per day on weekdays and 750 tons per day on Saturdays for a total permitted capacity of 393,200 tons per year, which is anticipated to go into effect in the spring of 2024. The facility would not be expanded in the first phase. In the second phase, the facility size would be increased from the current size of 22,480 square feet to approximately 32,480 square feet and improvements would be made to the on-site rail system.

In addition, the company wishes to expand its weekday operating hours to 6 a.m. to 6 p.m.



The Benefits

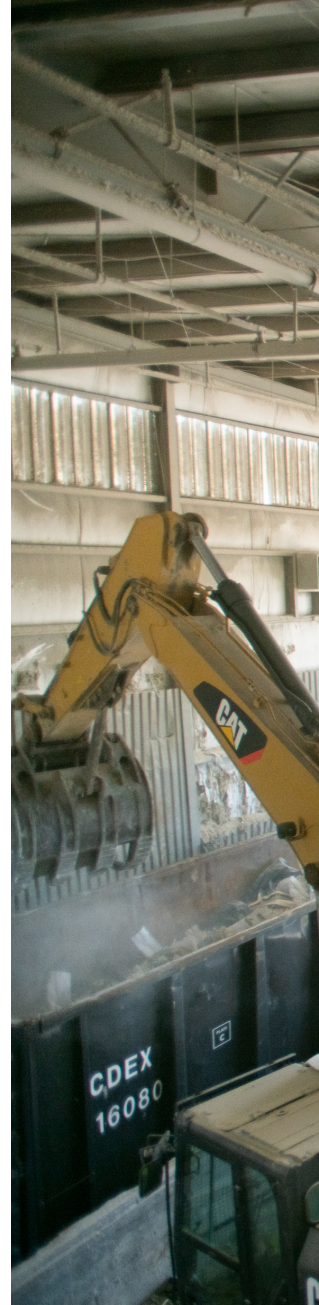
- ReSource Waste Services of Ware expects to create new jobs as the business expands. The company anticipates that the employee count will increase from six to ten.
- The company's annual operating budget is expected to double in size, leading to a larger economic impact in the community as its workers, vendors and suppliers visit the site and spend money in the Town and region.
- The company is in discussion with the Town of Ware to begin to pay a host community fee to the Town upon its approval to manage more volume.
- The company already provides in-kind and philanthropic support to the community, and that support will increase as the facility expands. The company also has begun initial outreach to organizations that serve environmental justice communities near the facility.

Approvals Required

The project will require approvals from several agencies, and the general public will have an opportunity to provide comments and to participate in a community informational meeting. As part of the application process, the company will be conducting a traffic study, sound analysis, and air quality analysis.

The following entities must approve the project:

- Massachusetts Environmental Policy Act Office (MEPA), which is part of the Executive Office of Energy and Environmental Affairs (EEA)
- MassDEP
- Ware Board of Health
- Ware Planning Board
- Ware Conservation Commission (for Stage 2)



About ReSource Waste Services

ReSource Waste Services is the largest processor of C&D debris in the New England region. The company's portfolio includes five processing facilities in Massachusetts, New Hampshire and Maine with permitted capacity of approximately 1.4 million tons, a trucking company and a waste collection business. The ReSource facilities accept virtually all forms of solid, non-hazardous C&D waste from waste handlers, demolition contractors, roofers, landscapers, property managers, contractors, and clean-out companies, recovering components of value and transforming them into reusable commodities. More information can be found at www.resourcewasteservices.com.