





ReSource Waste Services of Ware LLC

Informational Meeting to
Discuss Proposed Capacity
Increase

April 14, 2022

About ReSource Waste Services of Ware

- The facility is permitted as a construction and demolition (C&D) material handling and processing facility
- The facility serves as a consolidation site for C&D residuals from ReSource's other facilities, and utilizes an on-site rail system to ship those residuals to landfills
- The facility also accepts an incidental amount of a C&D materials from the local community
- ReSource Waste Services of Ware is proposing a two-step project to increase capacity, including expanding its weekday operating hours
- More information available on the Fact Sheet



Proposed Expansion of ReSource Waste Services of Ware

ReSource Waste Services of Ware, which operates a rail transfer facility at 198 East Street in Ware, MA, proposes to increase its permitted capacity.

About ReSource Waste Services of Ware

The facility is permitted as a construction and demolition (C&D) material handling and processing facility by the Massachusetts Department of Environmental Protection (MassDEP) and is authorized to process 750 tons per weekday and 500 tons per day on Saturdays, with a maximum annual permitted tonnage of 214,500 tons. In 2020, it processed approximately 120,000 inbound tons of material. It operates weekdays from 7 a.m. to 4 p.m. and on Saturdays from 7 a.m. to 1 p.m.

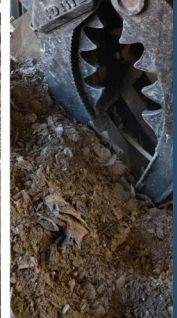

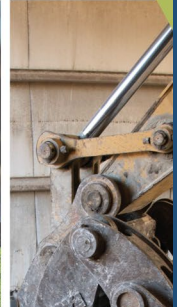

The facility received its site assignment permit from the Town of Ware in 2004 and received its Authorization to Operate from MassDEP in 2006. The facility had several owners/operators over the years and was acquired by our company on August 6, 2019.

The facility serves as a consolidation site for C&D residuals from ReSource's other facilities, and utilizes an on-site rail system to ship those residuals to landfills. The facility also accepts an incidental amount of a C&D materials from the local community. The facility employs six individuals and also supports indirect jobs associated with the haulers who deliver waste to the facility. Additional jobs in the region are tied to local goods and services related to the facility.

The Proposed Project

ReSource Waste Services of Ware proposes a two-step project: First it proposes to increase its permitted capacity to 1,125 tons on weekdays (310,625 per year), which is anticipated to go into effect in the spring of 2023 upon receipt of permit approvals. It then proposes to increase its permitted capacity to 1,400 tons per day on weekdays and 750 tons per day on Saturdays for a total permitted capacity of 393,200 tons per year, which is anticipated to go into effect in the spring of 2024. The facility would not be expanded in the first phase. In the second phase, the facility size would be increased from the current size of 22,480 square feet to approximately 32,480 square feet and improvements would be made to the on-site rail system.

In addition, the company wishes to expand its weekday operating hours to 6 a.m. to 6 p.m.



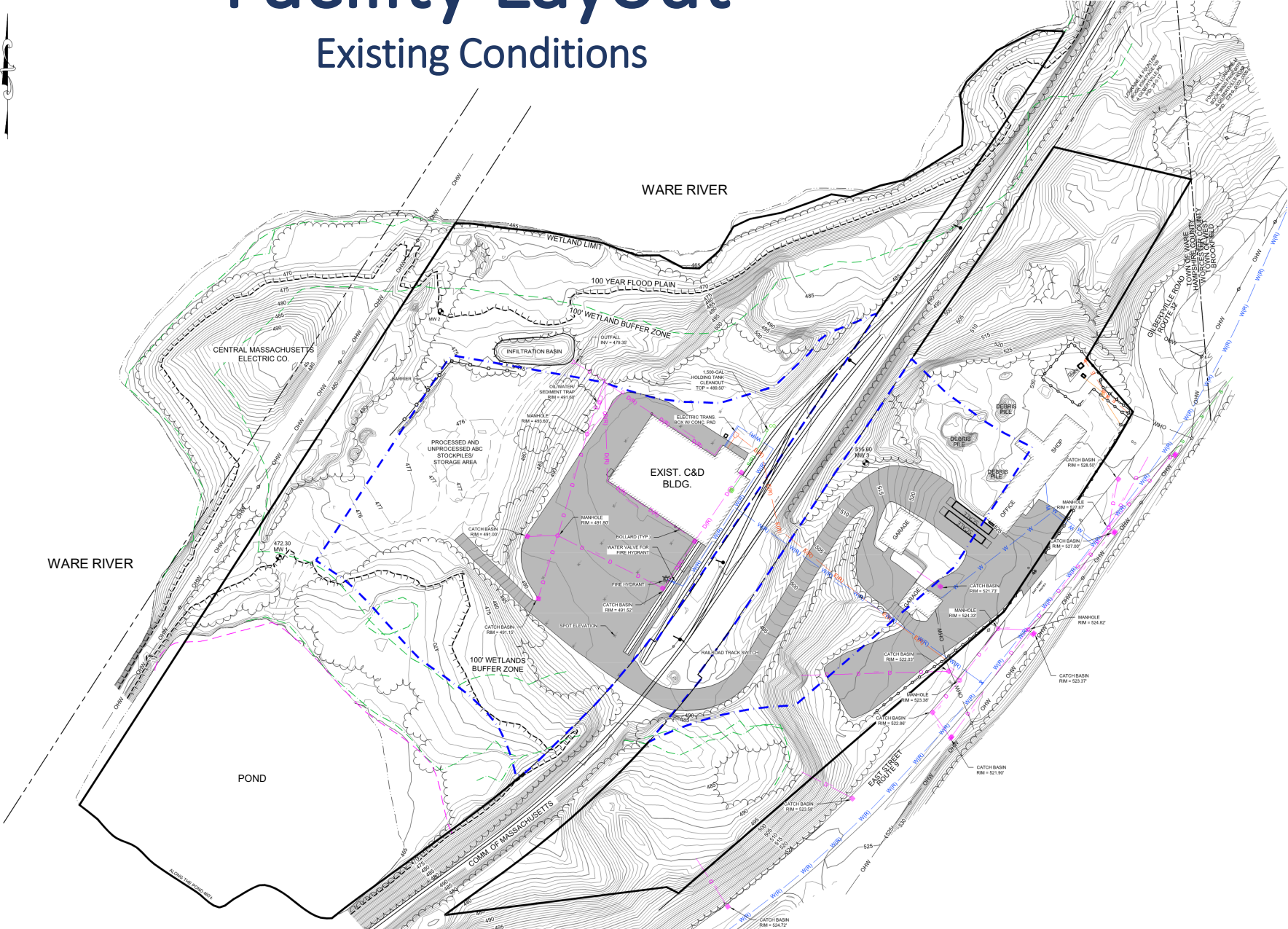
resourcewasteservices.com

Proposed Capacity Increases

Condition		Maximum Permitted Tons Per Day and Hours of Operation		Maximum Permitted Tons Per Year	Permitted Waste Type
		Mon – Fri	Sat		
Existing		750 (7 am to 4 pm)	500 (7 am to 1 pm)	214,500	C&D Only
Proposed	<u>Stage 1</u> Increase to this interim tonnage once Major Mod (BWP SW07) permit is received from MassDEP.	1,125 (6 am to 6 pm)	500 (No change to existing Sat hours)	310,625	C&D and Occasional street sweepings & catch basin cleanings
	<u>Stage 2</u> Increase to this level once the building has been expanded to process quantities above 1,125 TPD up to 1,400 TPD.	1,400 (6 am to 6 pm)	750 (No change to existing Sat hours)	393,200	
Total Tonnage Increase (Stage 2 compared to Existing)		650	250	178,700	C&D and Street sweepings & CB cleanings

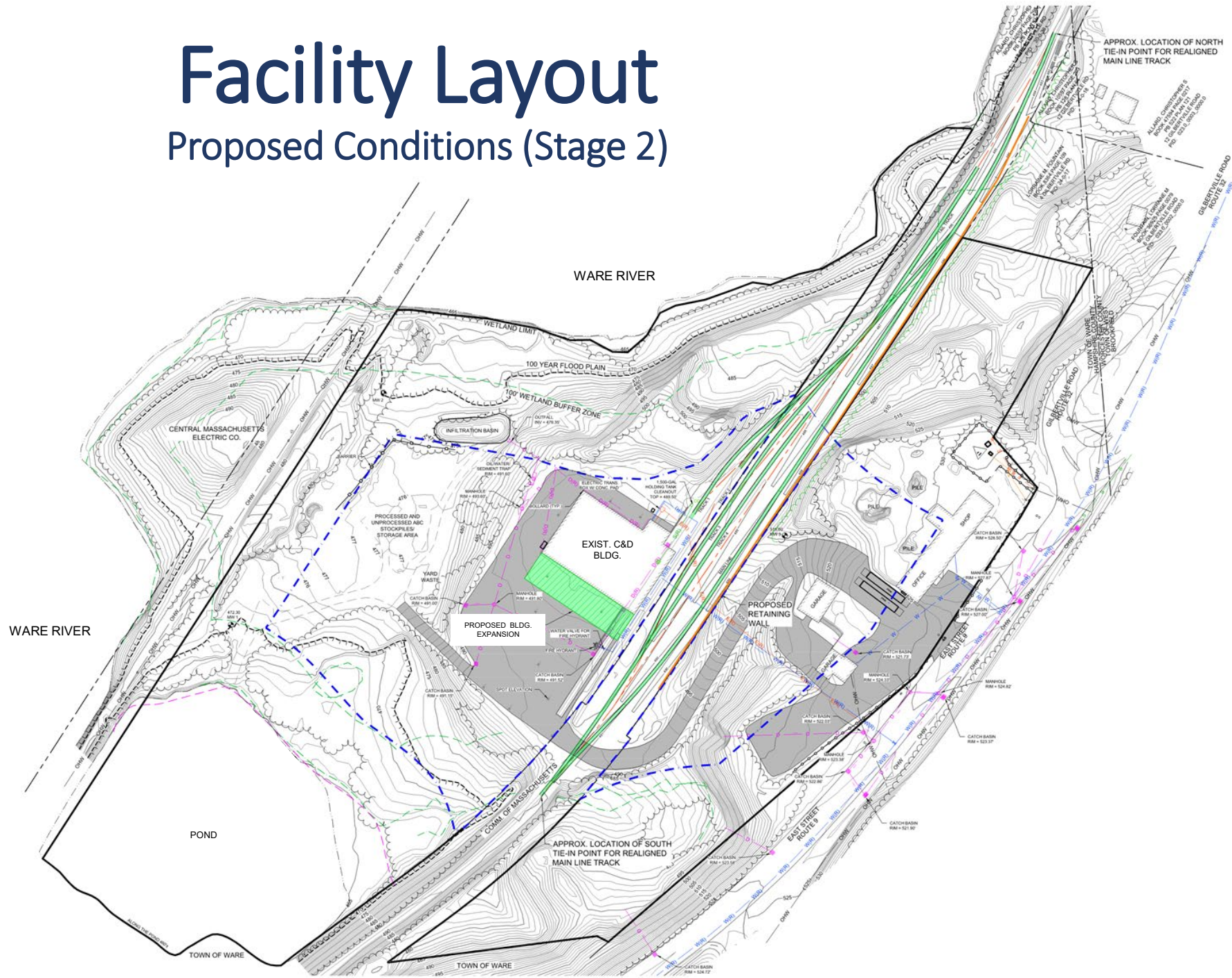
Facility Layout

Existing Conditions



Facility Layout

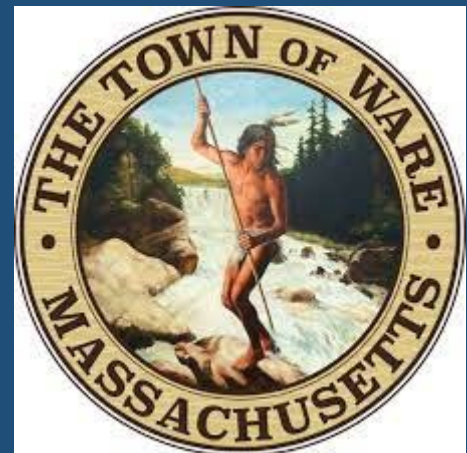
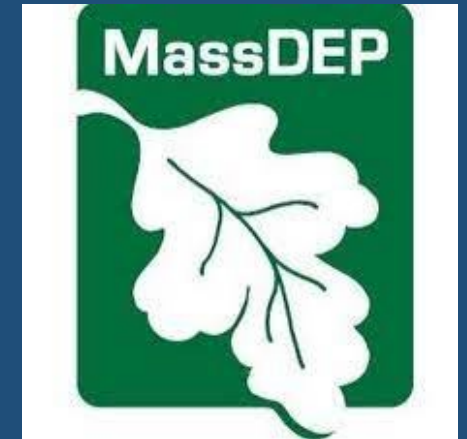
Proposed Conditions (Stage 2)



Permitting

- Massachusetts Environmental Policy Act (MEPA) Notice of Project Change
- Massachusetts Department of Environmental Protection (MassDEP) Site Suitability Report for Site Assignment Modification.
- Ware Board of Health Site Assignment Modification
- Ware Planning Board Special Permit Modification*
- MassDEP Solid Waste Permit Approval*

* Separate for Stage 1 and Stage 2, about one year apart.



Timeline

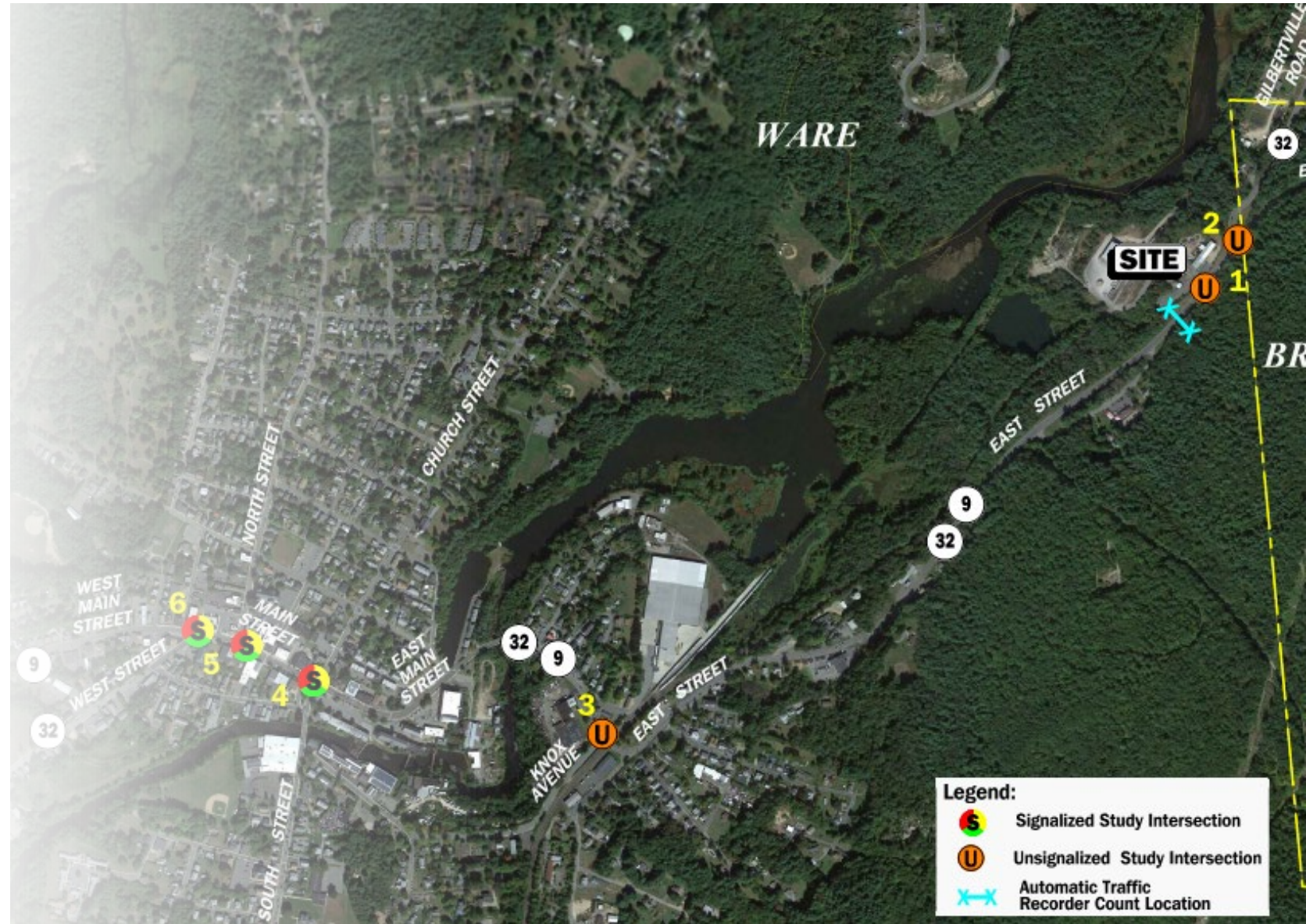
- Filing of NPC with MEPA – **April 2022**
- MEPA Certificate Issued – **June 2022**
- Submit Site Suitability Report to MassDEP for Site Assignment Modification – **June 2022**
- MassDEP Determination on Site Suitability – **September 2022**
- Site Assignment Modification Issued by Board of Health – **December 2022**
- Obtain Planning Board Special Permit Modification for Stage 1 Increase – **January 2023**
- Obtain **Stage 1** Permit from MassDEP – **by Summer 2023**
- Obtain **Stage 2** Permit from MassDEP – **Late 2024/Early 2025**

MEPA Review

- Provides for Public Input
- Requires MassDEP to study environmental impacts, and to “use all feasible measures to avoid, minimize, and mitigate damage to the environment”
- Facility conducted full MEPA review in 2002
- A Notice of Project Change (NPC) is being prepared for the proposed 2-staged capacity increase.
- Consistent with past NPC filings, the current NPC will include the following studies:
 - Traffic Study
 - Sound Analysis
 - Air Quality Analysis

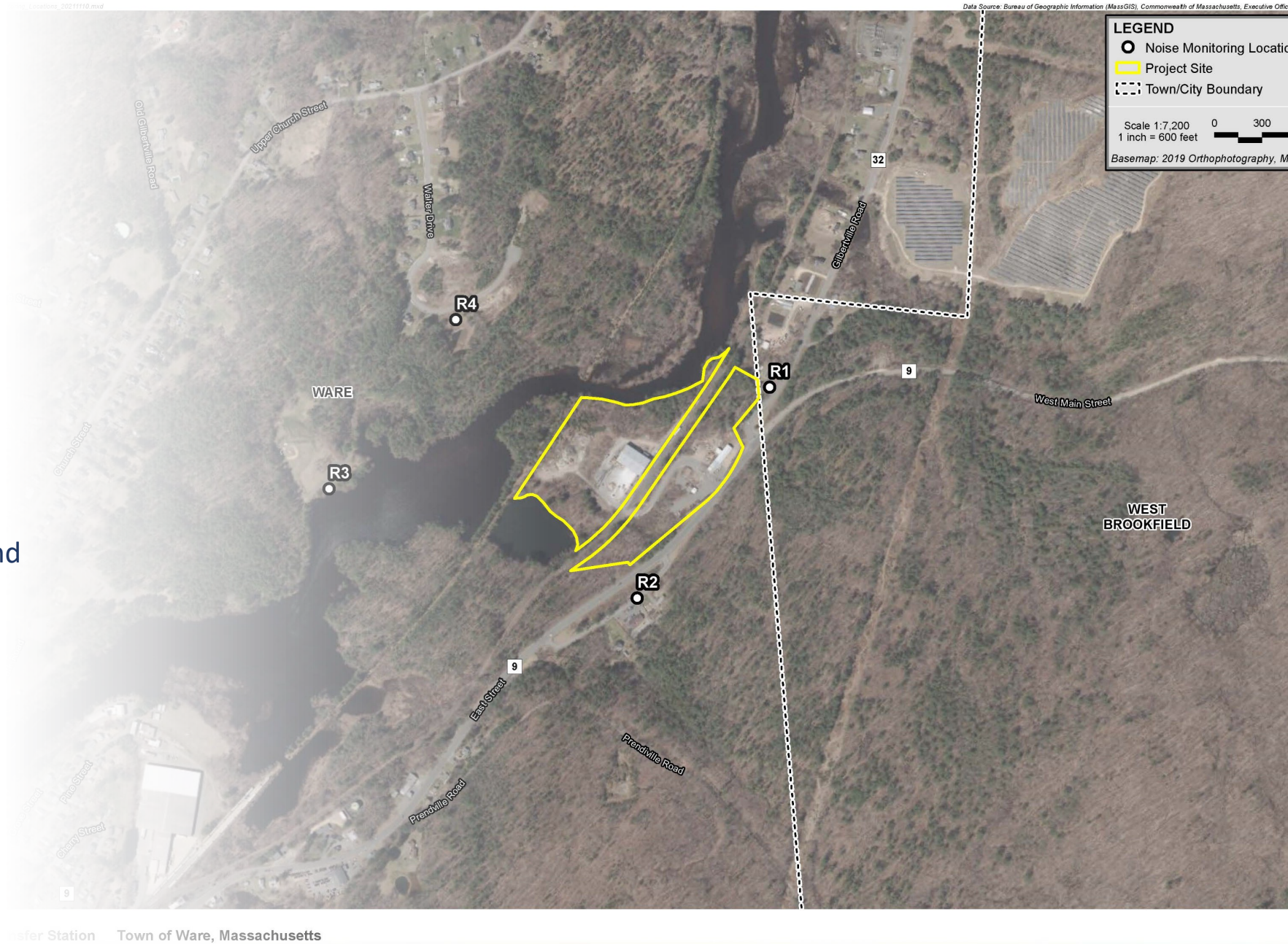
Traffic Study

- A comprehensive field inventory of traffic conditions on the study area roads was performed.
- The study will:
 - Identify current trips associated with the site;
 - Perform a safety analysis of the study area locations;
 - Project future traffic conditions and estimate project-related traffic increases;
 - Evaluate project impact and report on any mitigation measures that may be required.



Sound Analysis

- Ambient monitoring completed.
- Sound modeling being finalized for incremental activities and expanded hours.
- Sources included in sound modeling:
 - Heavy equipment in building and material handling;
 - Truck backup beepers;
 - Railcar pushing and coupling.

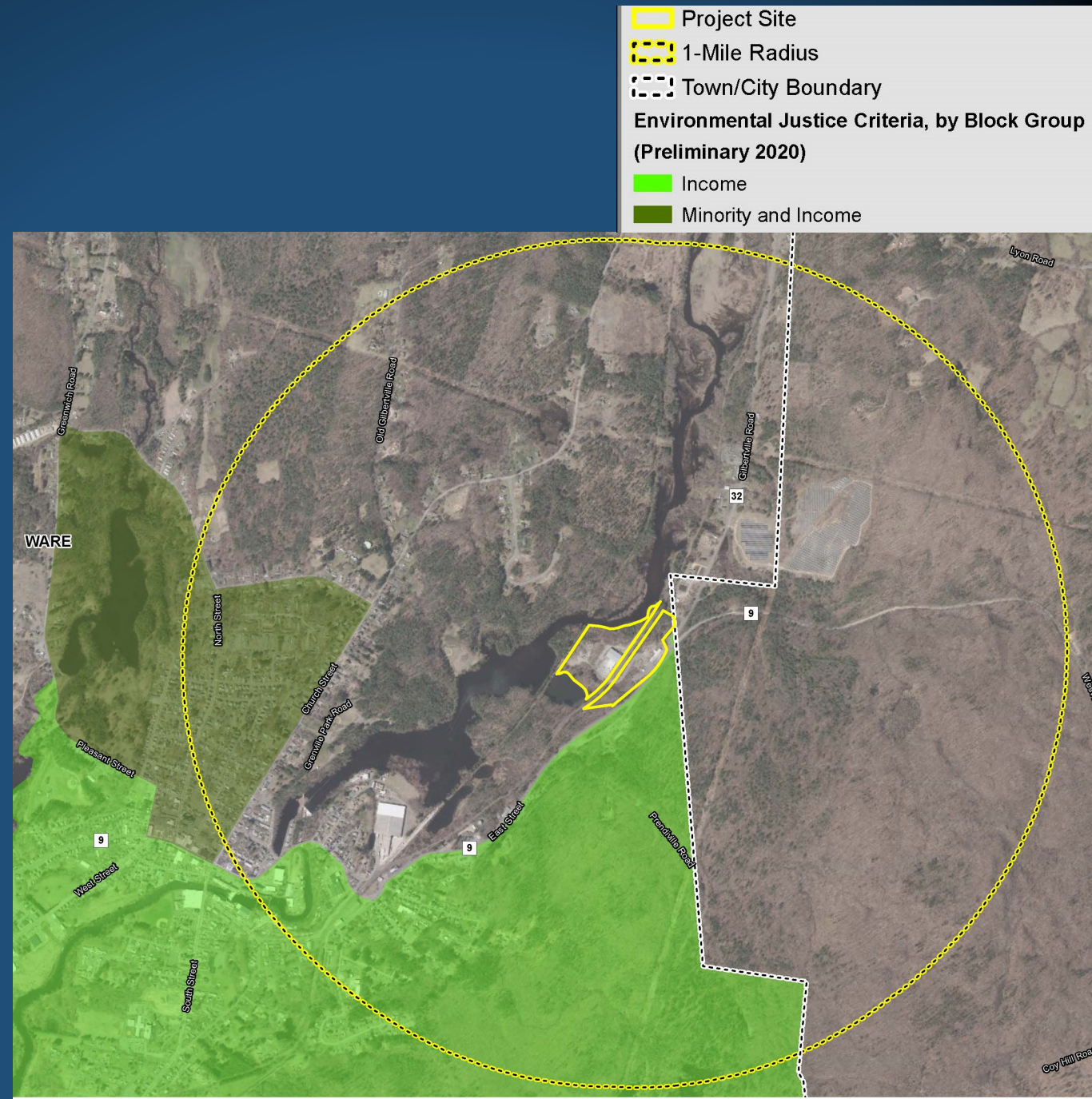


Air Quality Analysis

- Incremental air emissions have been quantified for the following sources:
 - Dust sources
 - On-site heavy equipment
 - Traffic sources
- Stationary source air emissions are de minimis (below MassDEP air permitting thresholds)
- Computer air dispersion modeling will show all impacts are below EPA and MassDEP health-protective standards.

Environmental Justice (EJ)

- The MEPA Office has defined EJ Populations based on income, minority, and English proficiency
- There are new MEPA outreach & analysis requirements for projects near EJ Populations
- The proposed ReSource Ware capacity increase will not disproportionately affect EJ Populations:
 - Not in a mapped EJ area
 - Almost all large trucks arrive from the east via Route 9



Ways to Have Input

- Provide questions & comments to us
 - Soliciting input in advance of filing MEPA NPC
 - Questions or comments to resource-ware-info@epsilonassociates.com
 - Project fact sheet available at
 - English:*
<https://resourcewasteservices.com/wp-content/uploads/2022/03/ReSource-Ware-Fact-Sheet-English.pdf>
 - Spanish:*
<https://resourcewasteservices.com/wp-content/uploads/2022/03/ReSource-Ware-Fact-Sheet-Spanish.pdf>
- Review & comment on the NPC when published
 - Request that we provide you electronic or hard copy
 - Find the project notification at <http://eeaonline.eea.state.ma.us/eea/emepa/emonitor.aspx>
 - Submit comments at <https://eeaonline.eea.state.ma.us/EEA/PublicComment/UI/searchcomment>